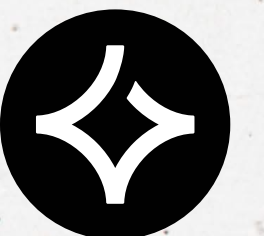


# AI ASSISTANT BY GRAPHISOFT

YOUR SMART  
DESIGN PARTNER

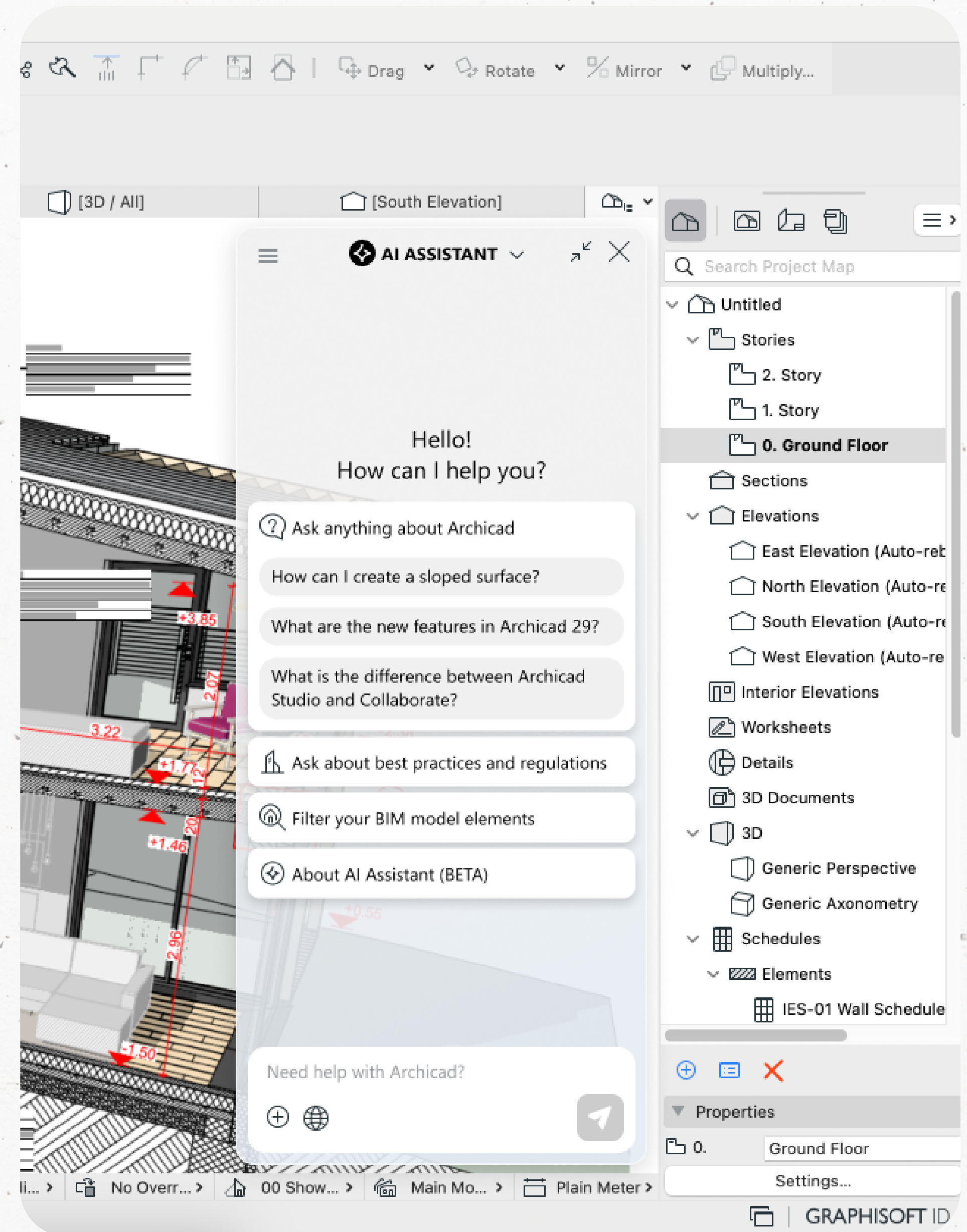




# WHAT IS AI Assistant?

AI Assistant is more than a tool—it's your intelligent design partner, embedded directly into all Graphisoft solutions: Archicad, MEP Designer, DDScad, and more to come. Designed to streamline workflows and elevate creativity, AI Assistant empowers architects and engineers to focus on what they do best: designing great buildings.

Whether navigating complex BIM models or seeking expert guidance, the AI Assistant is always ready to help—right inside your design environment.





# SHAPING TOMORROW'S TOOLS FOR ARCHITECTS AND ENGINEERS

The AI Assistant is a cornerstone of Graphisoft's Design Intelligence Strategy. It evolves continuously to support complex tasks, unlocking new ways of working and enabling smarter, data-informed decisions across every stage of the design process.

## Seamless in-app experience

The AI Assistant (BETA) is embedded directly into Archicad 29, DDScad 21, and MEP Designer, offering a seamless in-app experience. Intelligent prompts, model queries, and expert guidance are at your fingertips without having to switch tools.

## BIM model querying with natural language

Select elements in your BIM model using plain-language commands. For example, you can ask the AI Assistant (BETA) to "select all doors on the first floor" or "highlight elements without fire ratings," making model navigation and editing faster and more intuitive.

## Product knowledge from trusted sources

The AI Assistant (BETA) draws from Graphisoft resources, including product guides, support articles, Community insights, and Learn courses. This ensures that answers about tools, workflows, and features are accurate and up to date.

## AI Visualizer integration

The AI Assistant (BETA) connects directly to the AI Visualizer, allowing you to generate stunning visualizations from your models using simple text prompts. This helps bring design ideas to life quickly and creatively.

## Privacy, security, and local development

Graphisoft developed the AI Assistant (BETA) in-house, to align with Nemetschek's strict data privacy standards. Customer data is not used for training. Complete control and user confidentiality is ensured.



## WHERE TO FIND AI Assistant?

The AI Assistant is currently available as a preview, with its full commercial release expected in 2026. The AI Assistant (BETA) version is included in Archicad 29, DDScad 21, and MEP Designer and will expand across the entire Graphisoft product portfolio. It is also available in subscription plans: Archicad Collaborate, MEP Designer Studio, Archicad Studio, and DDScad Electrical Collaborate. These plans offer full access to the AI Assistant (BETA) capabilities, including product knowledge previews, BIM model query functions, and visualization support.

Note: While you're free to explore its current capabilities, please note that the final set of features, pricing, and subscription plan details are still being evaluated. Early access lets you experience the tool and help shape what's next.

## ARE YOU READY TO LEVERAGE THE AI Assistant BY GRAPHISOFT?

Visit **[www.graphisoft.com](https://www.graphisoft.com)** to start your trial, explore pricing, or contact your local partner.

